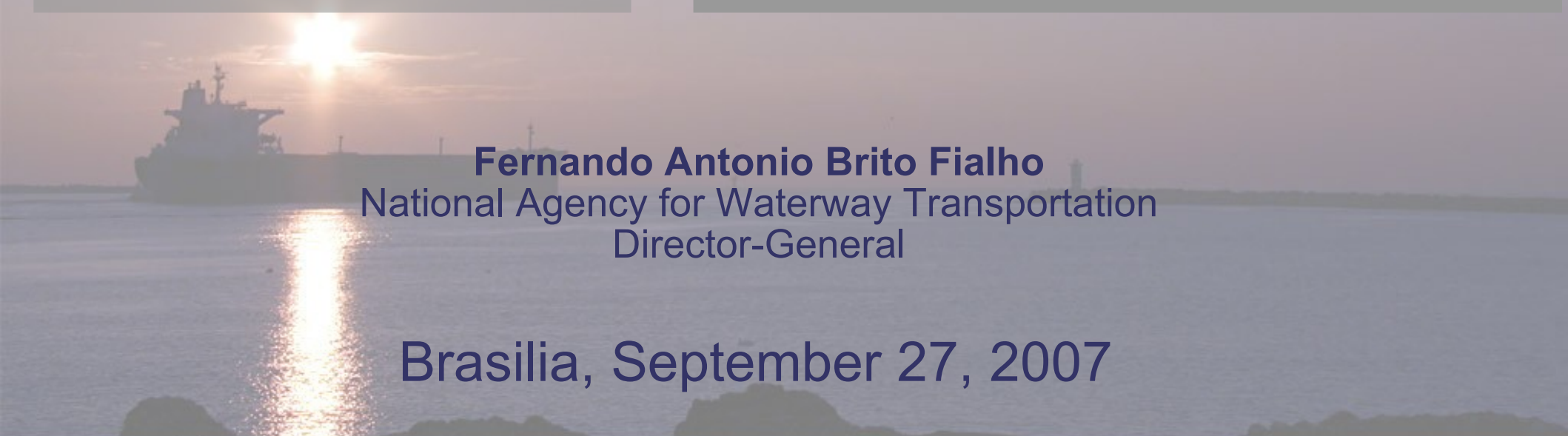


Brazil Port's Sector

A background image showing a large ship at sea during sunset. The sun is low on the horizon, creating a bright reflection on the water. The ship is silhouetted against the bright sky.

Fernando Antonio Brito Fialho
National Agency for Waterway Transportation
Director-General

Brasilia, September 27, 2007

General Facts about Brazil



Federation: 27 states

Government Type: Federative Republic

Latin America's Largest Country

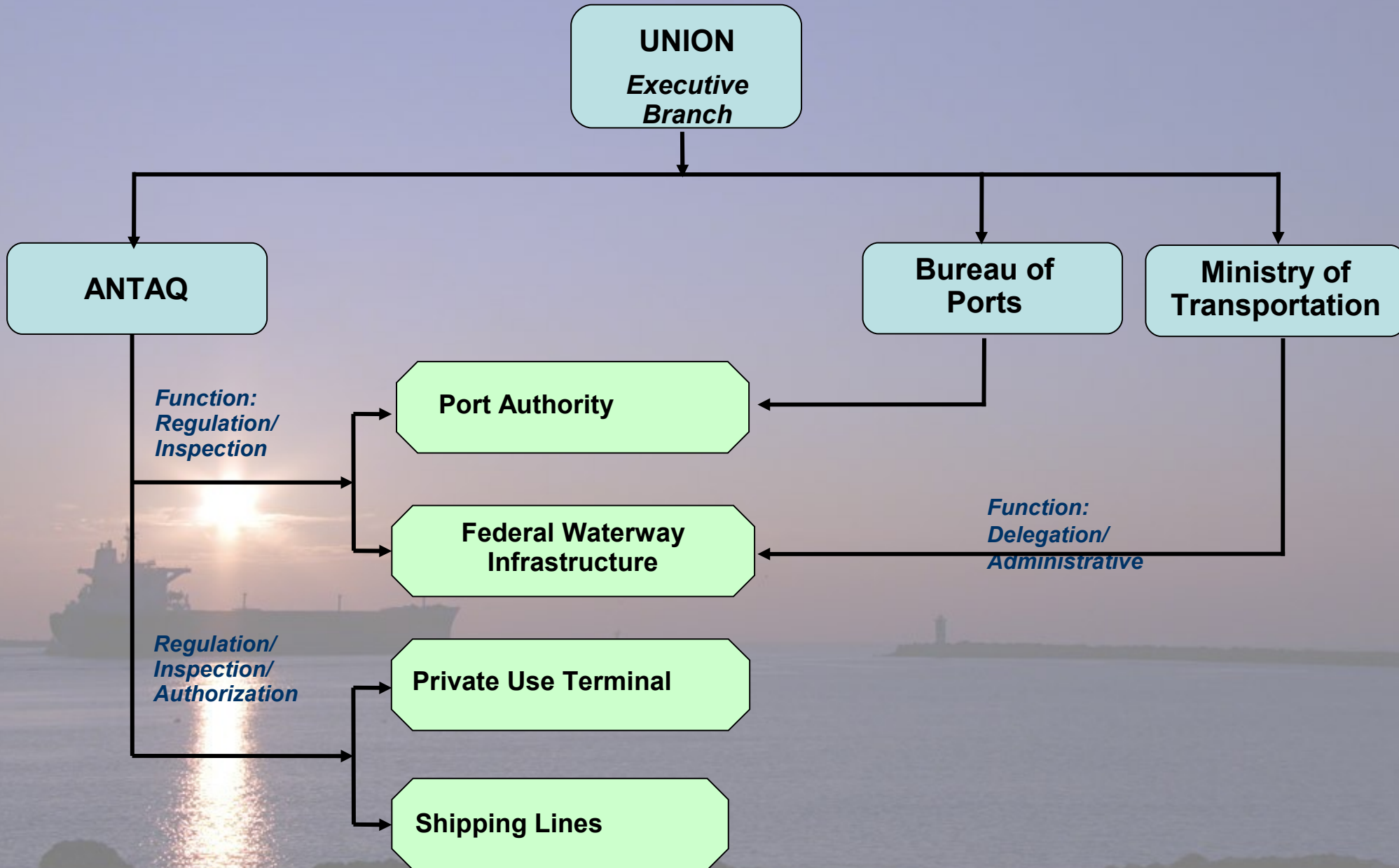
Total Area: 8 511 996.3 Km²

Coastline: 8 511Km

Population : 186 million

World's 10th Economy

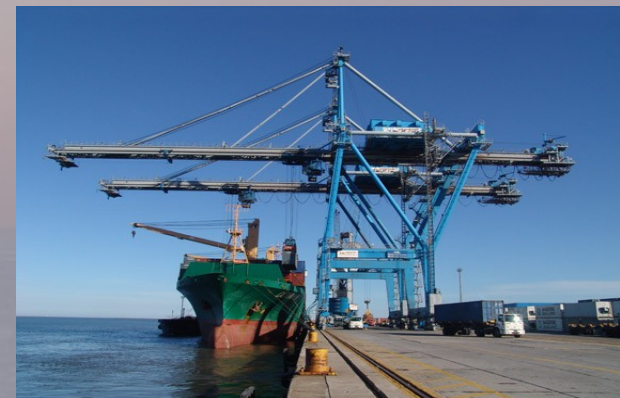
The State- Framework



National Agency for Waterway Transportation ANTAQ

Institutional Facts

- **Established by Act n° 10.233, June 5th 2001**
- **Effective in February 2002**
- **Federal Agency linked to the Ministry of Transportation and to the Bureau of Ports (SEP)**



National Agency for Waterway Transportation ANTAQ

Range of Action

- Shipping companies for international shipping, cabotage, port and maritime supply
- Shipping companies operating in rivers, lakes and inland waterways
- Public Ports (Landlord Ports): 35
- Private Use Terminals: 124
- Use of the Federal Waterway Infrastructure
- 17.000 Km of the main inland waterways

National Agency for Waterway Transportation ANTAQ

Regulation Duties

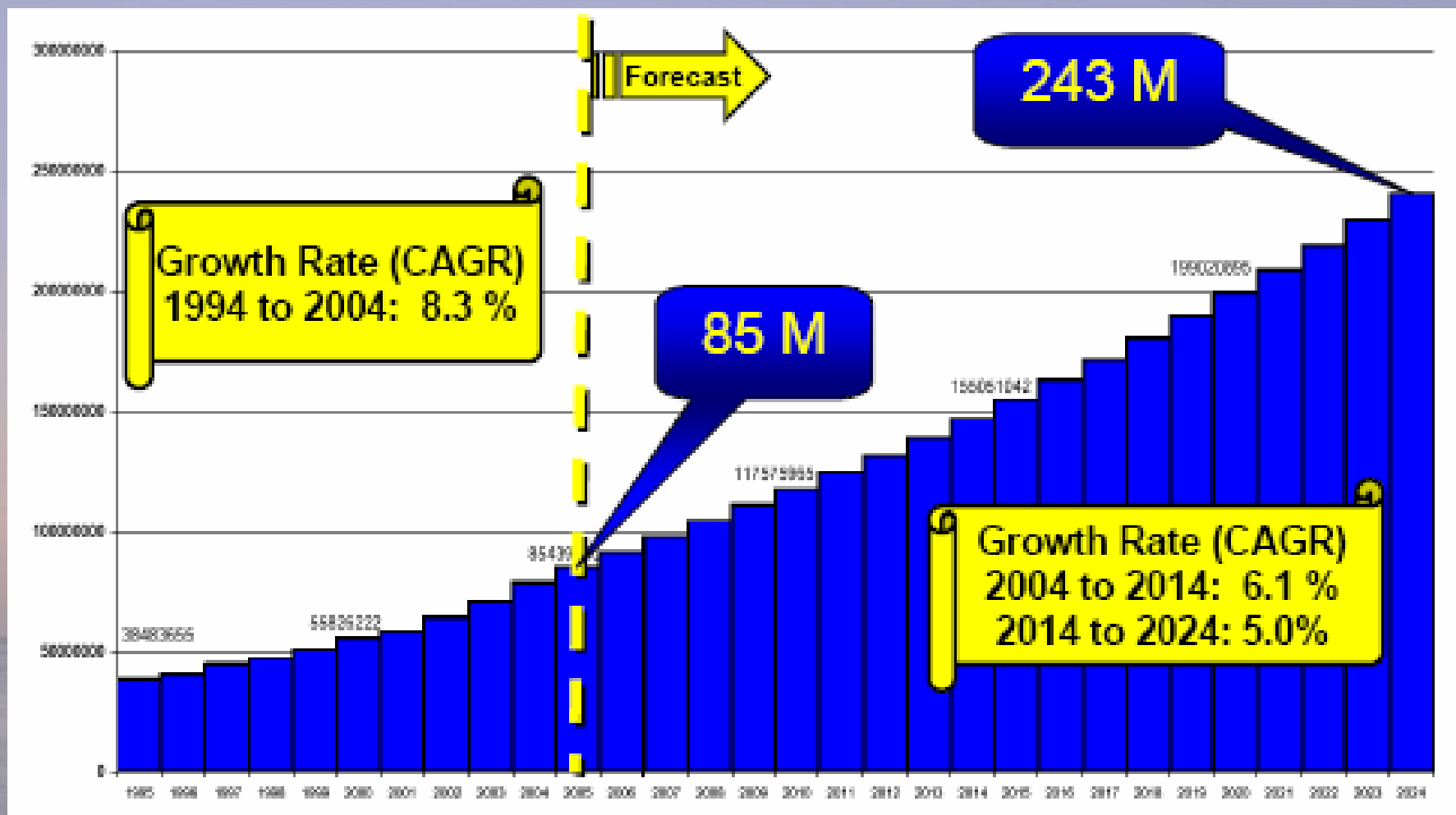
- **Management of Grants**
- **Inspection and Monitoring the Sector**
- **Establishment of the Rules in Accordance with the Law**
- **Information to Study and Set up the Sector's Structure**
- **Integration of the Multimodal System**

Brazilian Ports

- **Brazil's Economic Growth- 5% per year**
- **95% of Brazil's Foreign Trade is performed through its ports**
- **497 million tons transported through international shipping in 2006**



World Container Forecast to 2024 in TEUs (186% increase in next 20 years)



Source: Global Insight, 2004

Brazil's Cargo Demand

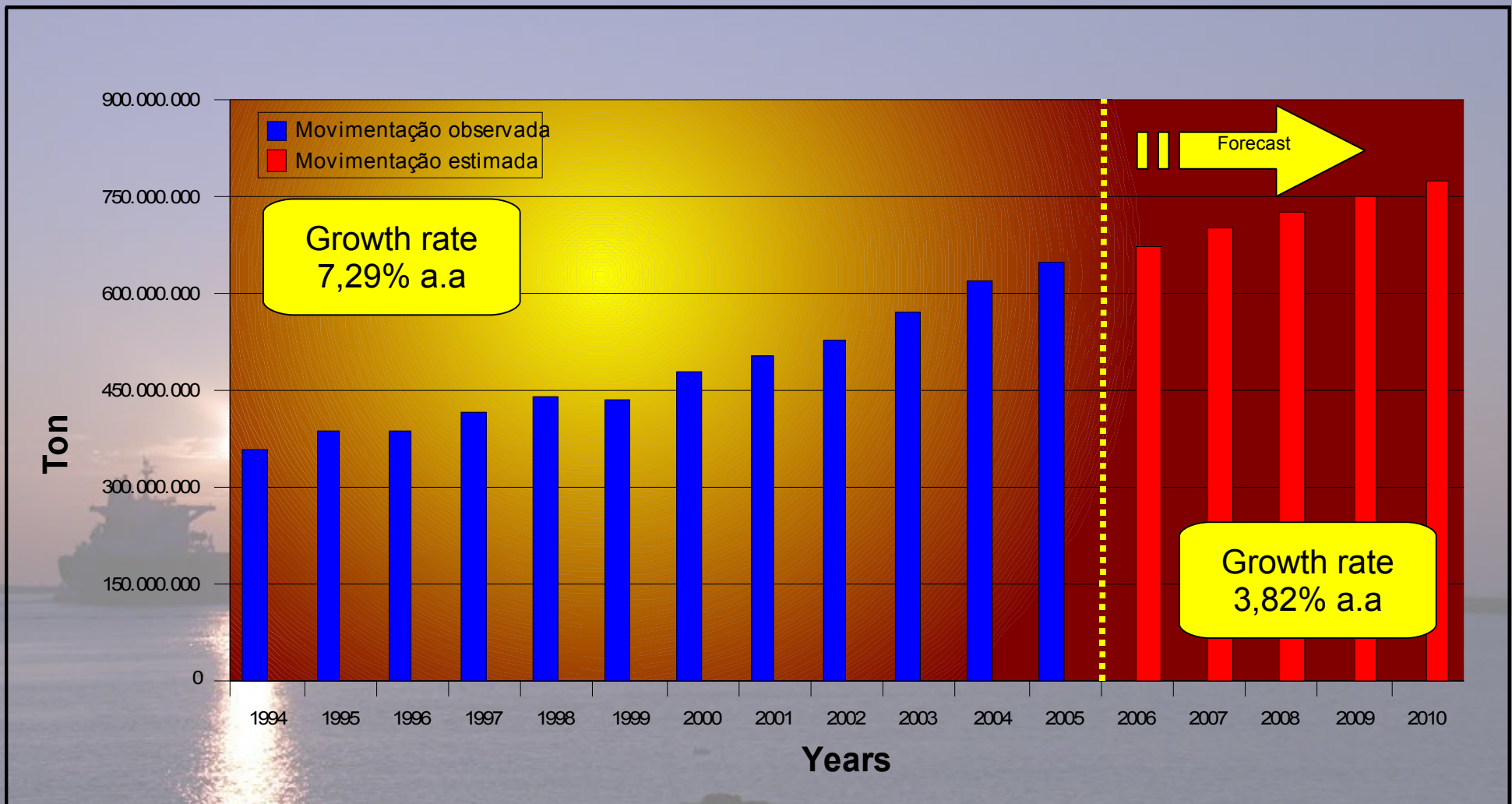
Cargo Handling- Development and Forecast

(Em t)

Ano	Movimentação observada	Movimentação projetada
1994	360.418.100	
1997	414.239.765	
2000	478.059.521	
2003	570.790.055	
2007		700.977.639
2010		778.315.926

Brazil's Cargo Demand

Cargo Handling- Development and Forecast



Brazil's Cargo Demand

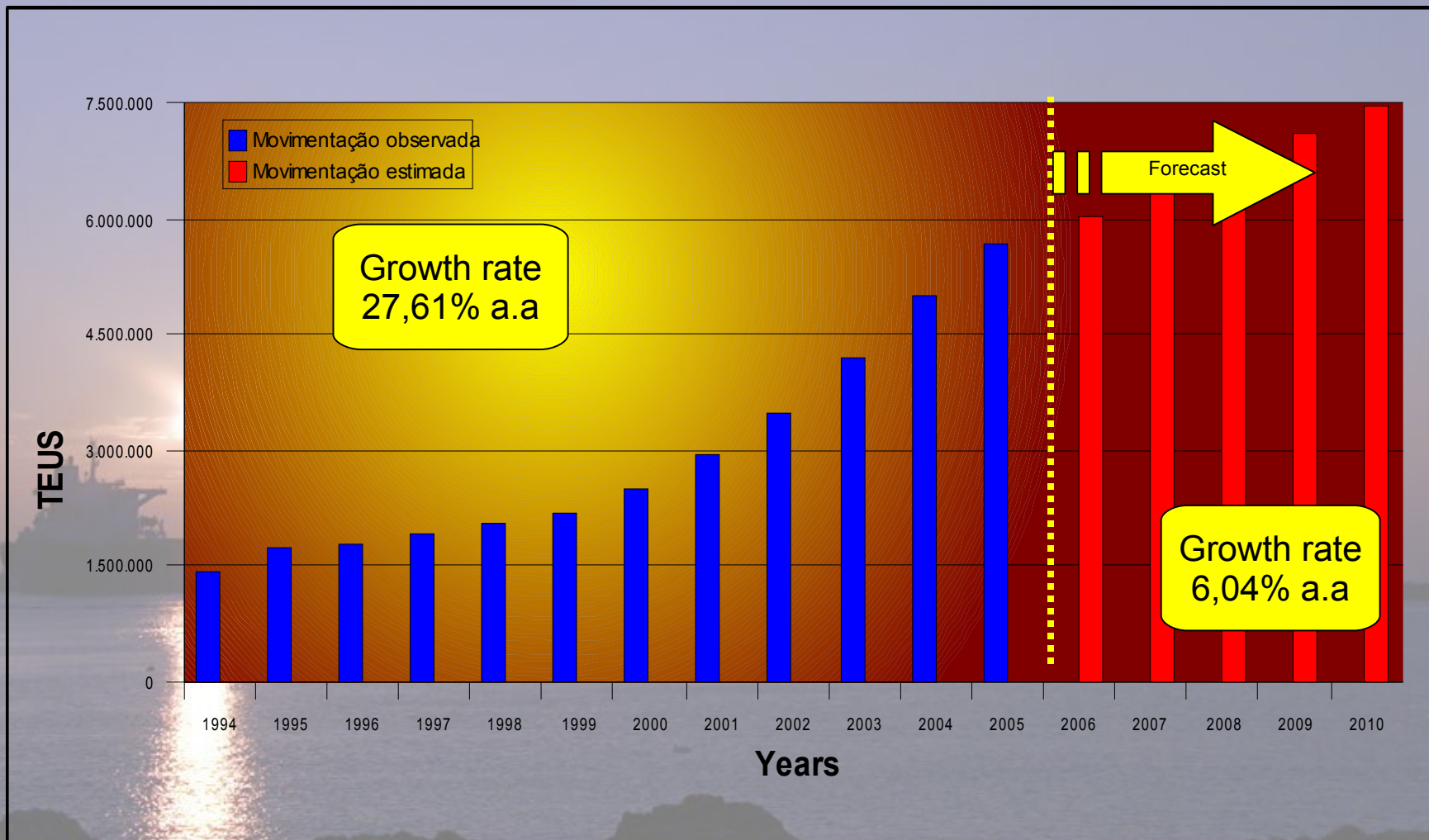
Container Handling- Development and Forecast

(Em TEU)

Ano	Movimentação observada	Movimentação projetada
1994	1.401.546	
1997	1.925.970	
2000	2.469.650	
2003	4.170.469	
2007		6.385.204
2010		7.475.521

Brazil's Cargo Demand

Container Handling- Development and Forecast



Brazil's Cargo Demand

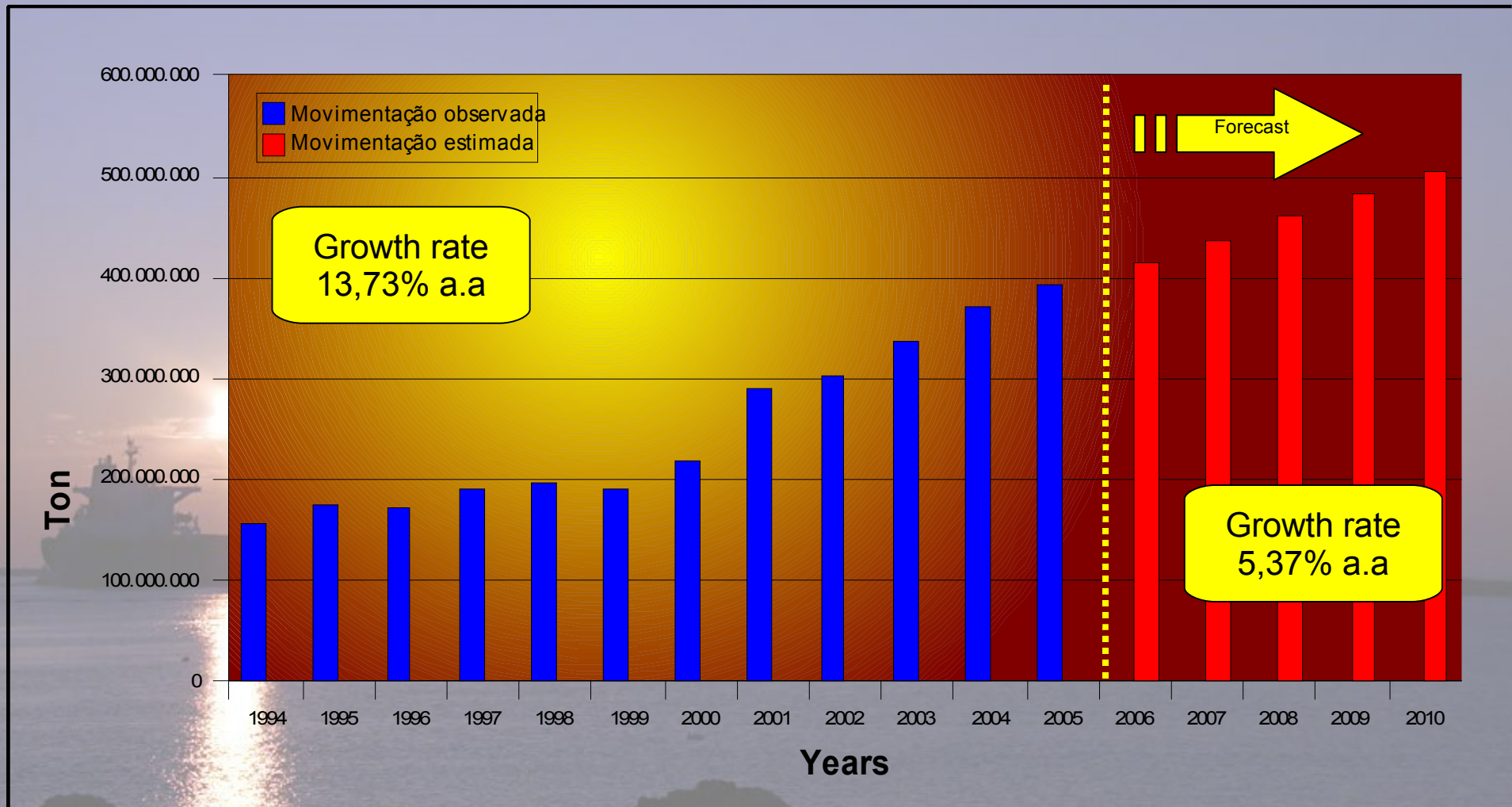
Solid Bulk- Development and Forecast

(Em t)

Ano	Movimentação observada	Movimentação projetada
1994	156.496.159	
1997	189.373.683	
2000	218.410.420	
2003	336.276.308	
2007		437.505.764
2010		504.408.512

Brazil's Cargo Demand

Solid Bulk- Development and Forecast



Brazil's Cargo Demand

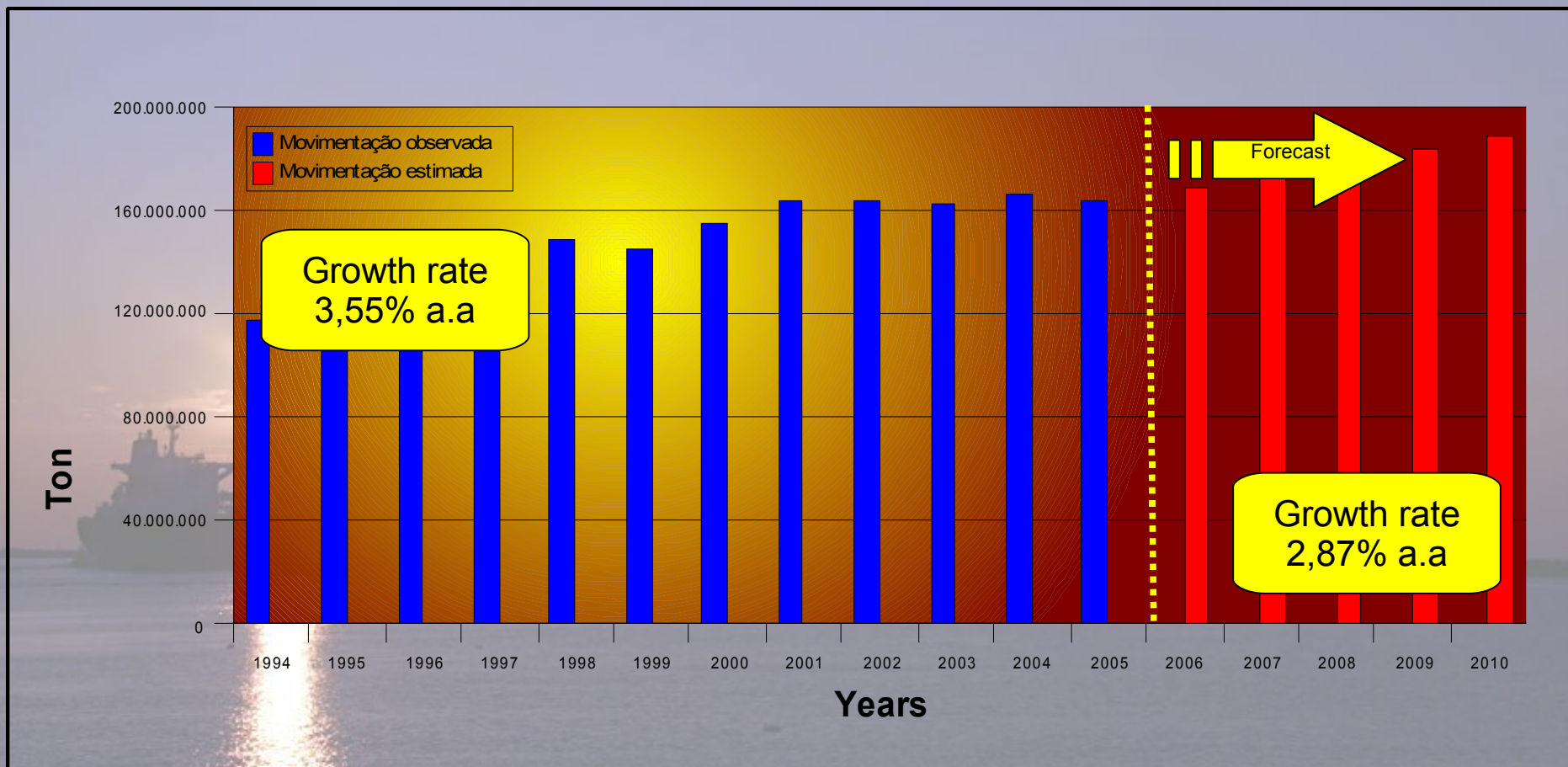
Liquid Bulk- Development and Forecast

(Em t)

Ano	Movimentação observada	Movimentação projetada
1994	117.706.425	
1997	130.878.306	
2000	154.386.971	
2003	161.886.081	
2007		173.376.072
2010		187.863.939

Brazil's Cargo Demand

Liquid Bulk- Development and Forecast



Brazil's Cargo Demand

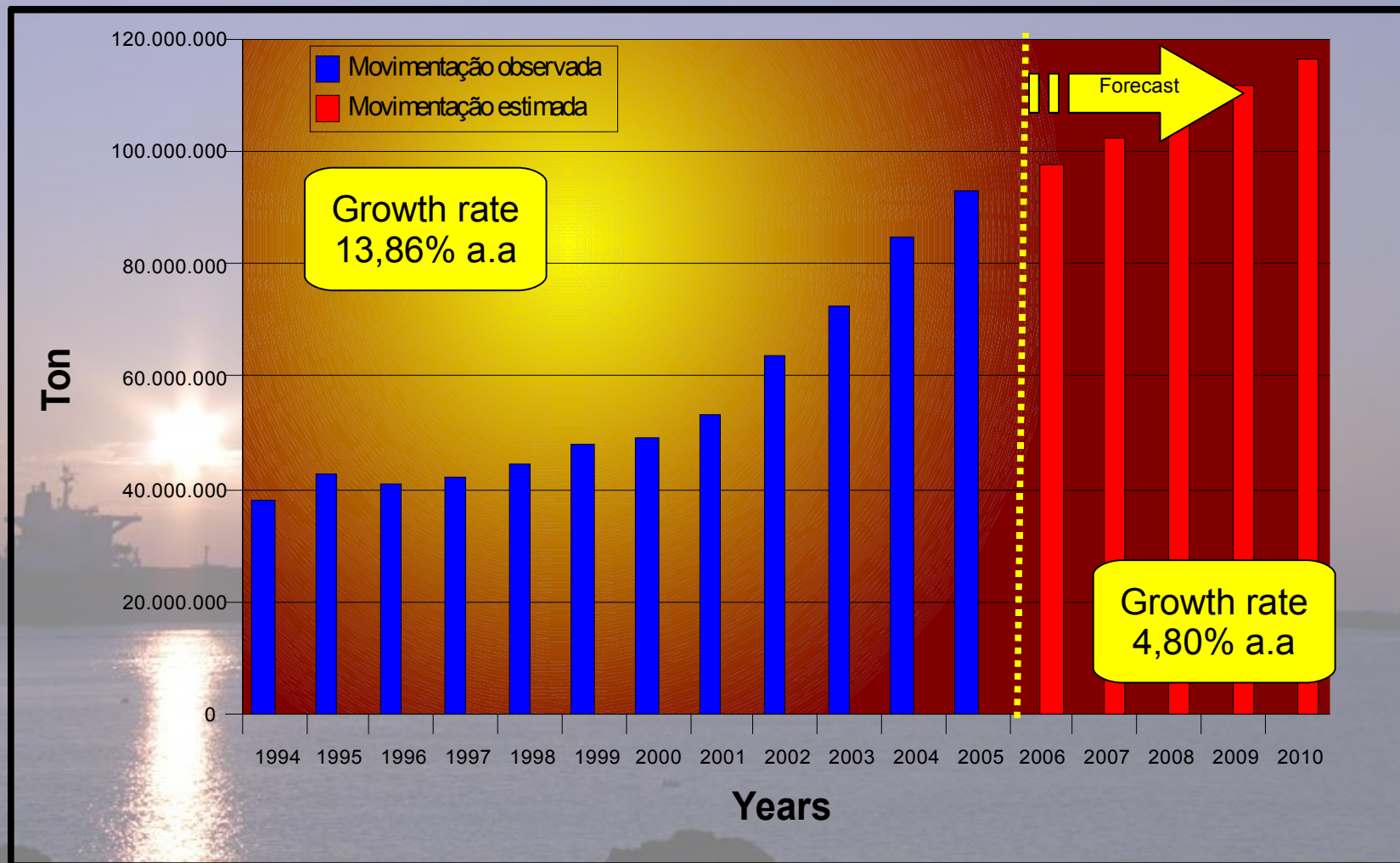
General Cargo- Development and Forecast

(Em t)

Ano	Movimentação observada	Movimentação projetada
1994	38.085.566	
1997	42.239.745	
2000	48.812.755	
2003	72.627.666	
2007		102.152.183
2010		116.184.425

Brazil's Cargo Demand

General Cargo- Development and Forecast



Reliable Judicial System to Invest in Ports

- **Stable Political System**
- **Structured Legal System**
- **Regulatory System: Bills n° 8.630 and n° 10.233/2001**
- **Consolidated Protection System for Competitiveness**
- **Enforced Private-Public Partnership System**
- **Brazil's Level of Economic Instability (Risk Level): 161**



How to Invest in Ports

Lease

- **Leasing of Public Ports to the Private Sector with the goal to construct and develop the port facility.**
- **Public service supply to the private sector in order to improve public terminal infrastructure.**
- **Procedures concluded through public bids.**
- **Contracts in effect for 25 years (renewal for another 25).**
- **Waterway access provided by the Public Port Administration.**
- **Adequate access to roadways**

How to Invest in Ports

Private Use Terminal

- **Authorization granted to the private sector to construct and develop private use terminals**
- **Terminal use upon free flow of prices.**
- **Flexible operation procedure for any kind of cargo.**
- **Contracts in effect for 25 years (renewal for another 25-year period)**
- **Guaranteed Investments with contract secured by irreversible clause**



ANTAQ
Agência Nacional de Transportes Aquaviários

Fernando Antonio Brito Fialho
Director-General
fernando.fialho@antag.gov.br
<http://www.antag.gov.br>
Tel.: 55 61 3447-1118