

National Agency for Waterway Transportation– ANTAQ

“The Regulatory Duties of ANTAQ”

Fernando Fialho
Director-General

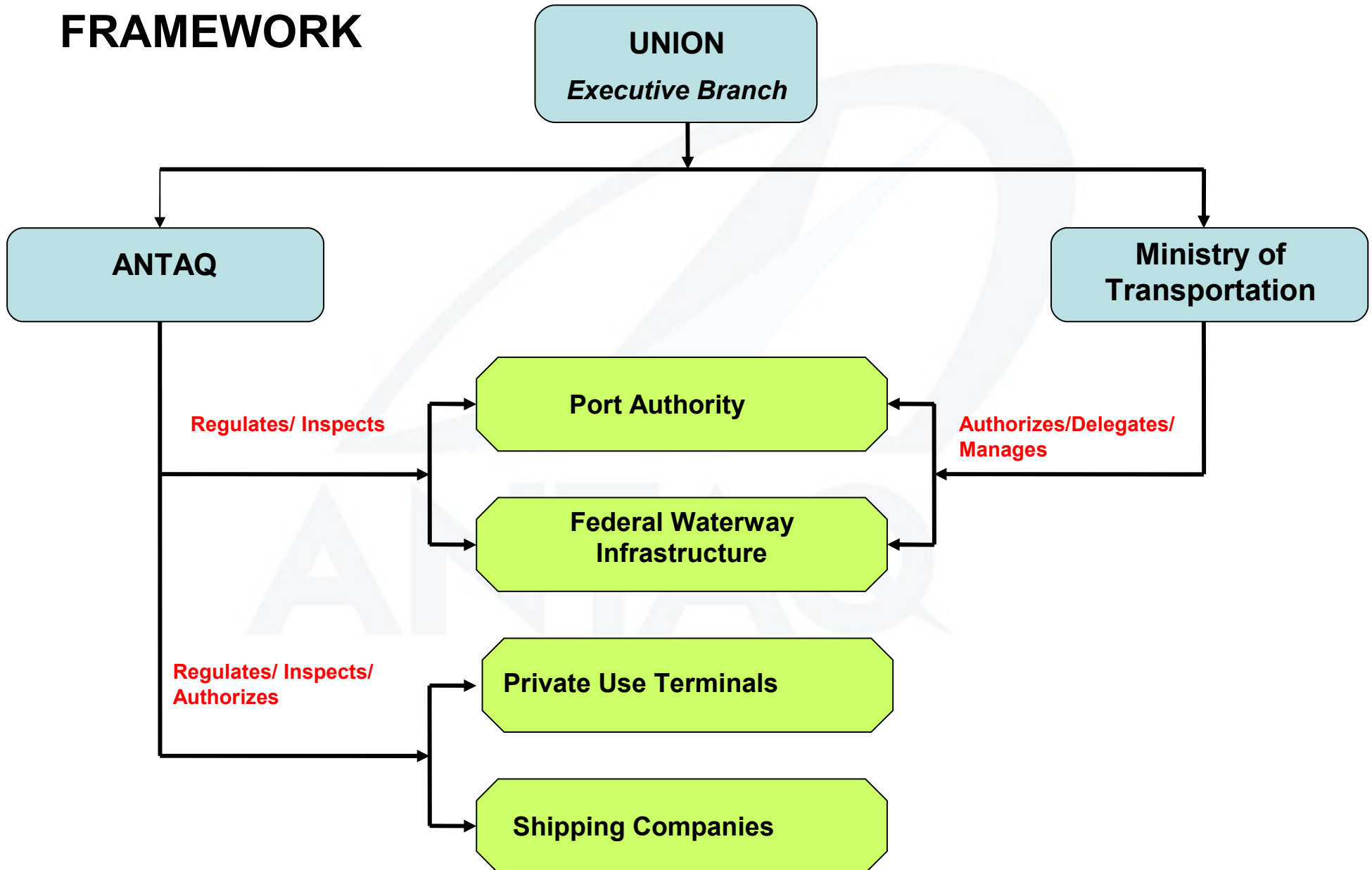
London, November 8th, 2006

Institutional Aspects



- Established by Act nº 10.233, June 5th 2001
- Start Working February 2002
- Federal Agency linked to the Ministry of Transportation

BRAZILIAN STATE FRAMEWORK



MAIN DUTY

- To Regulate, supervise and inspect activities related to waterway transportation services and the usage of public port and waterway infrastructure run by public or private companies.



RANGE OF ACTION

- Shipping companies for international shipping, cabotage, portuary support, maritime support
- Inland waterway shipping companies for rivers and lakes
- Public Ports (Landlord Ports)
- Private Use Terminals
- Usage of Federal Waterway Infrastructure

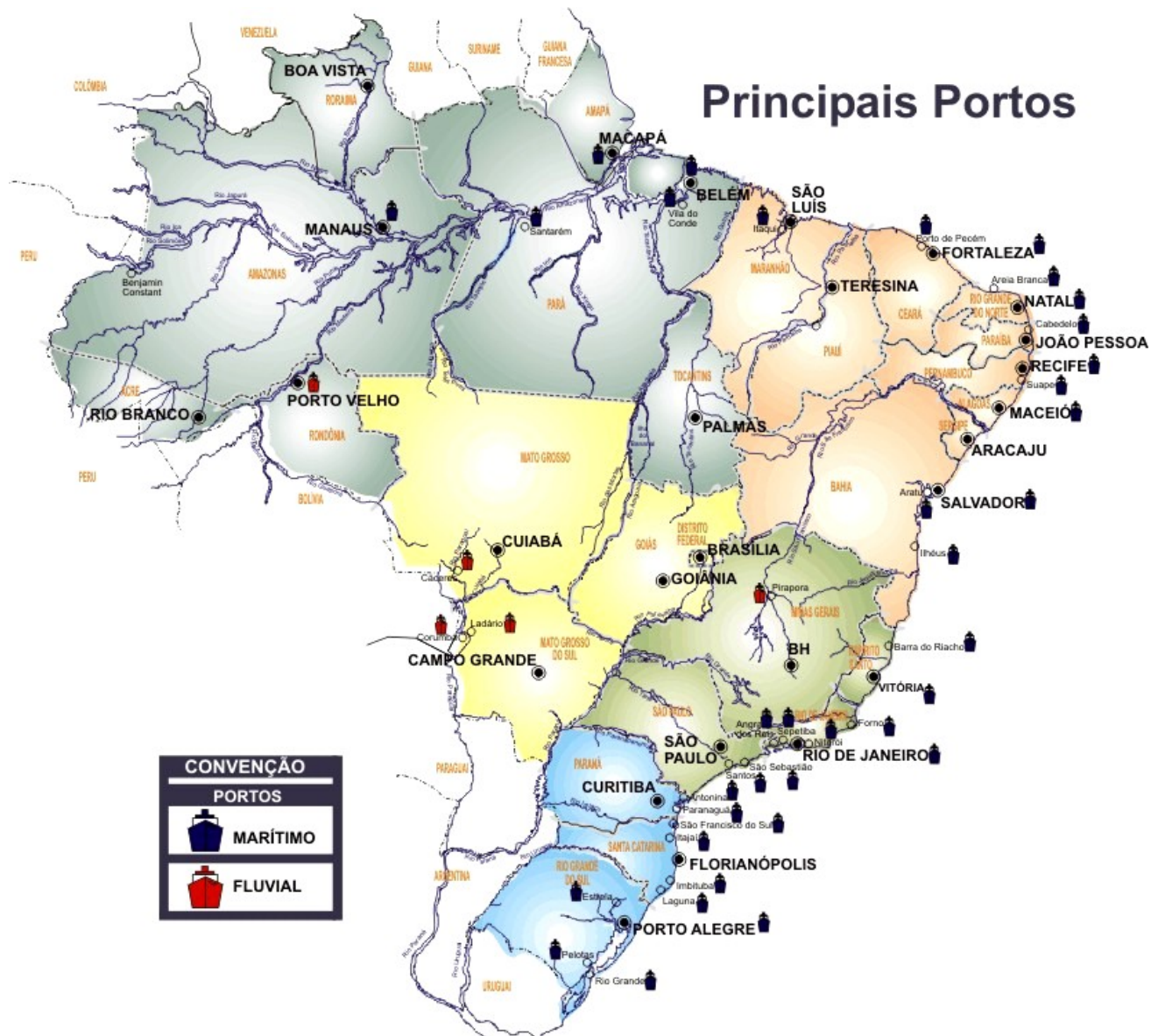
Designations – Port Sector

- **Establishes rules and standards to discipline the use of port infrastructure**
- **Bestows Grants for private use terminals**
- **Inspects Port Authorities**
- **Works towards consumers rights focusing on transparency, security and enviromental protection**
- **Controls and Approves port tariffs**
- **Indicates presidents to the “Port Authority Councils” (CAP)**

Port Institutional Organization

➤ Number of Ports	34
➤ Ports under Public Enterprise Control	18
➤ Ports under Private Enterprise Control	1
➤ Ports granted to States	15
➤ Ports granted to municipalities	5
➤ Number of Private Use Terminals	134
➤ Inland Waterway Administration Units (federal)	8





Designations – Shipping Sector

- **Establishes rules and standards to discipline and organize the usage of shipping services**
- **Bestows grants for shipping companies**
- **Inspects international, cabotage, maritime and portuary support shipping companies operating in Brazil**
- **Authorizes afreightment of foreign vessels**
- **Authorizes government cargo transportation**
- **Confirms operational agreements**

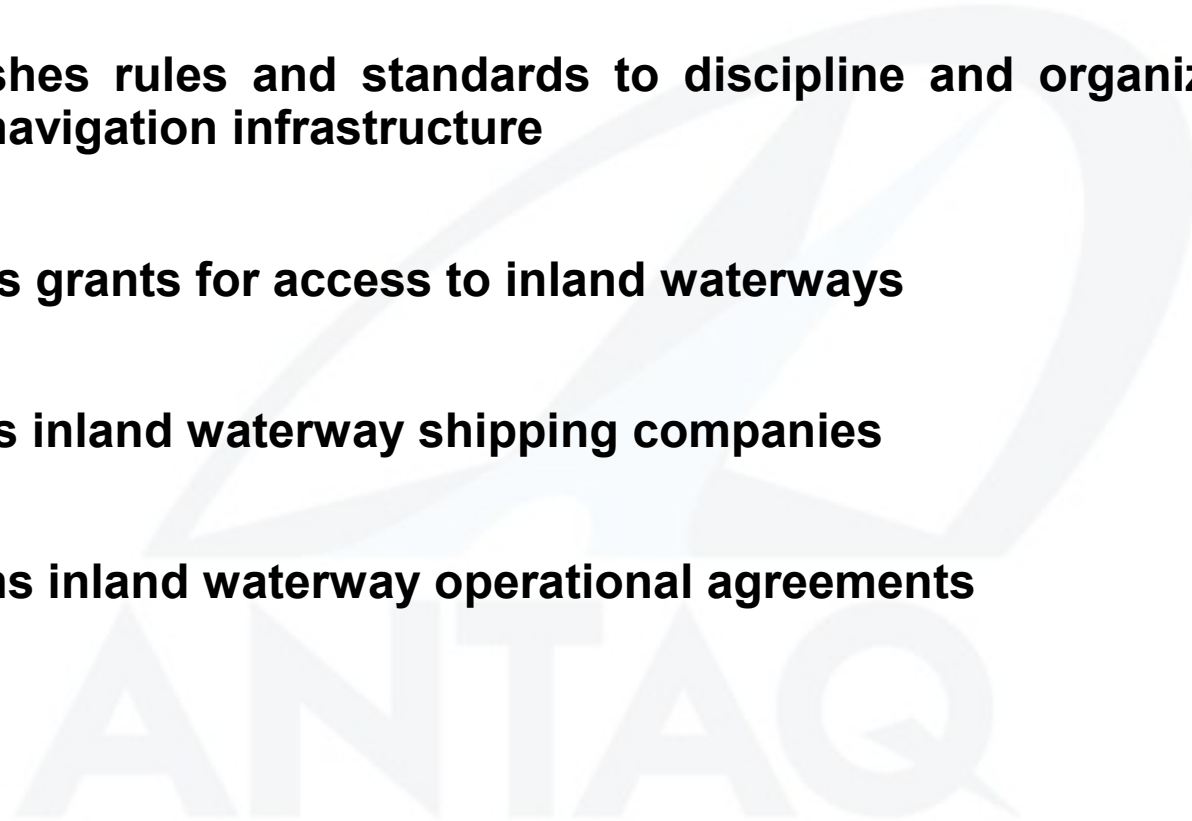
Licensed Shipping Companies

▶ Brazilian Shipping Companies	198
• International Shipping	20
• Cabotage	25
• Portuary Support	84
• Portuary Support/Dredging	19
• Maritime Support	50
• Inland Waterway	19



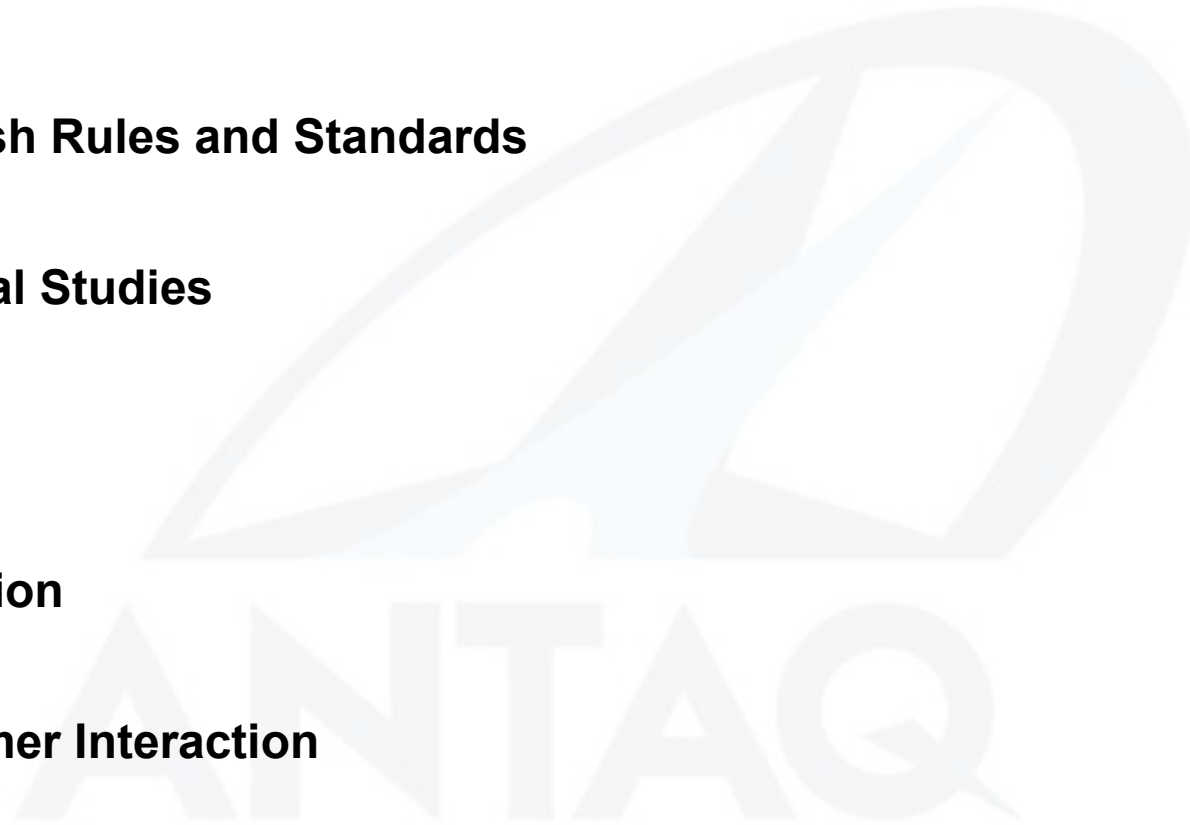
Designations – Inland Waterway Navigation Sector

- **Establishes rules and standards to discipline and organize the usage of inland navigation infrastructure**
- **Bestows grants for access to inland waterways**
- **Inspects inland waterway shipping companies**
- **Confirms inland waterway operational agreements**



Regulatory Process

- **Establish Rules and Standards**
- **Sectorial Studies**
- **Grants**
- **Inspection**
- **Consumer Interaction**



Regulation focusing on:

- Safety, stability, quality, accuracy on freight costs and tariffs, for the service.
- Equalize relations between service users and providers always protecting public interest
- Arbitrate conflicts among service providers and users, also preserving economic rules
- How to assure private investment in infrastructures are safe and interesting for both parts





ANTAQ
Agência Nacional de Transportes Aquaviários

Fernando Fialho
Director-General
fernando.fialho@antaq.gov.br
<http://www.antaq.gov.br>
Tel.: (61) 3447-1118